

## **Project Highlights**

### **Mid market Hotel in Guwahati**

A Market research and Economic feasibility Study for a Mid-market Hotel development in Guwahati, was conducted by Spectra.

The proposed development comprises of approximately 75 rooms and extensive F&B and banqueting facilities. Spectra has also assisted the development with identifying an international operator for the management of the property.

### **Club Development & Hotel Operator Search for Mixed use development in Noida**



Spectra is currently assisting one of the leading developers in India with the Concept Development, Economic Feasibility, Technical Assistance, Pre-Opening Services and Management Assistance of the upcoming Club House within a Mixed Use development planned in Noida.

Spectra also assisting the developer with an Operator search for the proposed Hotel development planned as a part of the entire Mixed use Development.

### **Residential Club development, Bangalore**

Spectra is involved with one of the top real estate development companies in India today, to assist the development of the Club house for their upcoming residential development in Bangalore.

Spectra has assisted with the Market Research, Concept Development and Economic Feasibility for the Club and is currently assisting with Technical assistance for the Club development.

### **Integrated Mixed-use development, Himachal Pradesh**

Spectra has assisted with the Concept development and Product Positioning and now is assisting with an Operator Search, Technical Services Assistance, Pre-Opening and Marketing and Sales for a proposed integrated Mixed-use development including a Green Resort, Serviced Apartments, Spa and Club in Rajgarh Valley, Himachal Pradesh

### **Hallmarc Hotel, Coimbatore**

Spectra has helped in the feasibility for a 120 room mid market hotel located in Coimbatore. Spectra has assisted the project from concept, operator search, with expression of interest from an international hotel brand to technical assistance.



Spectra is currently undertaking procurement of FF&E from identification of suppliers to negotiating for best prices and delivery timelines for Hallmarc and also assisting the development with its interiors.

### **Recreational Club at Pune**

Spectra has assisting with the development of a Recreational Club in Pune spread over an area of 65,000 sqft.

Spectra carried out the Concept development, Market Research and Economic Feasibility Study and is currently assisting with Technical Assistance for the proposed Club development.

### **Integrated Mixed-use Leisure and Recreation development at Pune**



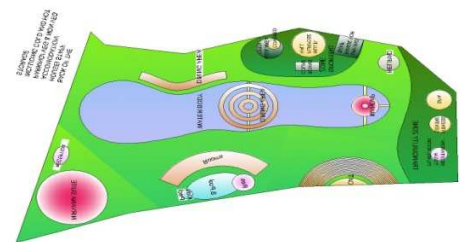
Spectra, in association with ILC, has assisted with the development of Integrated Mixed use Leisure and Recreation development in Pune over approx 15 acres

Spectra was involved with the Concept development, Market Research and Economic Feasibility and is now assisting with an Investor Operator search for the proposed development.

### **Beyond the Caves, An Event Destination at Ajanta**

Spectra's involvement with the development was with assistance for Concept development, Market Research and Economic Feasibility for an Event destination at a site in Ajanta. The destination is planned over approx 16 Acres and is set with the backdrop of the famous UNESCO world heritage site, the Ajanta Caves.

Spectra further assisted the development with the conceptual layout plan for the various facilities and with the initial architectural inspirations for the proposed development.



### **Entertainment Paradise, Jaipur**

Spectra has assisted the project with Concept Development, Economic Feasibility, Technical Assistance, Pre-Opening Services and Management Assistance of the Recreational club in the facility. Spectra also assisted in vetting the economic feasibility of the proposed Hotel development and has assisted with the Operator tie up for the hotel.

### **Mid market Hotel in Chennai**

Spectra has assisted the Voora Group of Developers, a leading real estate player in South India, with the Feasibility study, Investor and Operator Search for a proposed Mid-market hotel in Porur, Chennai.

### **Sports Club Complex and a Hotel development, Latur**



Spectra's involvement with development of a Sports Club Complex in Latur covers the Market Research, Space Planning and Economic Feasibility Study and Initial Concept and Positioning for the Sports Club Complex

Spectra assisted in the Market Research & Economic Feasibility and Operator search for the Mid Market Hotel at Latur.

### **Mixed use development at Vrindavan**

A Mixed Use Development around the Krishna temple and Krishna Lila Park including a theme park, serviced accommodation to be sold and leased back to be operated as a resort is proposed to be developed in Vrindavan over approx 143 acres.

Spectra had been engaged to assist the development with the Concept development, Market Research and Economic Feasibility Study for the proposed Mixed Use Development at Vrindavan.

### **Mixed Use Wellness Resort in Coorg**



Spectra carried out the Market Research and Economic Feasibility Study and Concept Development for a Mixed Use Wellness Resort in Coorg, spread over 30 acres of lush, green hills. The project is promoted by a leading property development company in Bangalore.

### **North West Frontier Restaurant in Muscat**

Spectra was engaged by one of the largest corporate houses in The Sultanate of Oman to develop a North West Frontier specialty restaurant at the Royal Opera House in Muscat. Spectra's scope involves Concept Development and complete Technical Assistance in setting up the 120 cover restaurant.



### **Hotel in Colombo**



Spectra has conducted a Market Research and Economic Feasibility study for the an existing Five Star Hotel in Colombo and its complete scope will extend to Project Positioning, Technical Services and Management Assistance for the hotel.

### **Bombay Boulevard Club, Mumbai**

Spectra has assisted ILC is involved in the development of a high end recreational club and sporting facility in Juhu, Mumbai

Spectra, with ILC, assisting the project with Concept Development, Market research and Economic Feasibility Study for the Club.



### **5 Star Hotel, Guwahati**



Spectra was engaged by Brahmaputra Infrastructure Ltd. for the Concept Development, Market Research and Economic Feasibility of a five star hotel in Guwahati, Assam.

Spectra has also assisted the 10 acre development on the NH-37 with an Operator search.

### **Residential Club development, Ludhiana and Mohali**

Spectra was involved with one of the top real estate development companies in India today, to assist the development of Club houses. Spectra has carried out the Market Research and Economic Feasibility and Technical assistance for the up-coming residential units.

### **Lavasa, Maharashtra**

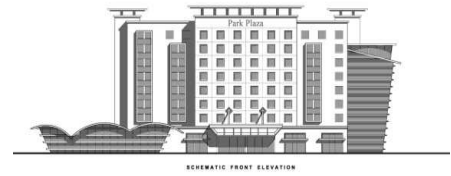


Lavasa, a self-contained, modern Hill Station is a subsidiary of HCC Real Estate Limited.

Spectra, in association with ILC, is assisting in consulting for Concept, Facility planning and Technical assistance for the Dasvino Club at Lavasa and also has a 10 year management contract with them.

### **Mid market Business Hotel, Pune**

Spectra has assisted the project with Concept Development, Feasibility Study, Fund Sourcing and Operator Search for the Development of a 200 room mid market business hotel in Kharadi adjacent to the EON SEZ development.



### **5 Star Hotel and Club , Mohali**



Spectra was involved with Ishan Hotels Group, based in Mohali, to assist with setting up of a five star Hotel and a High end Town club in the City .

Spectra has carried out the Market Research and Economic Feasibility Study, and assisted with Operator Search and Funding for the Hotel and Club.

### **Budget Business Hotels, Tamilnadu**



Spectra is assisting a well known hotels and restaurant brand of Tamilnadu to establish a chain of 7 hotels in various locations in Tamilnadu, initiating with Coimbatore.

### **Indirapuram Habitat Centre, Ghaziabad**

Spectra assisted the Indirapuram Habitat Center with planning and maximum utilization of space, technical services to develop Food and Beverage outlets for the complex, and with manpower and utilities planning. Spectra also facilitated the Hotel in the complex with an Operator tie up with a leading international brand of hotels.



Spectra has also assisted IHC in the development of Club in the mixed use development. Spectra, was involved with the Concept Development, Market research and Economic Feasibility Study for the Club.

## Pre Opening and Management of Hotel in Ranchi



SHS assisted a reputed real estate developer in Delhi with Pre-opening, Sales and Marketing and Management Services for their upcoming 54 room property located in the heart of Ranchi.

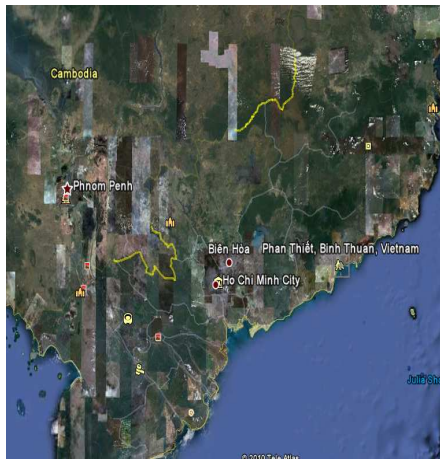
## Development of a Mid-Market Hotel Chain, Sri Lanka

Spectra is assisting one of Sri Lanka's leading business houses in the development of a Mid-market hotel chain which will have a presence across the country. Spectra's range of services involve developing the overall business strategy, brand and positioning for the hotel chain as well as identifying key locations across Sri Lanka for hotel development, in order to establish the hotel chain as one of the leading players in the hospitality market in Sri Lanka.

Spectra's strategy for the group involves initial development around the Colombo and Greater Colombo region as well along the Southern Coast of Sri Lanka, in prime leisure destinations such as Wadduwa, Bentota, Beruwala, Kalatura and Hambantota.



## Market Study for a Resort Investment opportunity in Vietnam



Spectra has conducted a Market Study for an investment opportunity in a resort development in Phan Thiet, Vietnam, a dynamic emerging market. The proposed development comprises of two ten storey luxury apartment towers, 23 townhouses and 6 exclusive beach front villas.

Vietnam is one of the most popular tourist destinations in the Asia-Pacific region and its tourism industry has been growing unprecedentedly over the past few years. Increasing foreign investment into Vietnam and continued economic growth continue to fuel strong demand for international quality upscale hospitality developments in the country.

### **Mid market Hotel in Shimoga (Karnataka)**

Spectra was involved in the development of Mid market Hotel in Shimoga. Spectra's involvement with the development ranges through Concept development, Market Research and Economic Feasibility. Spectra is further assisting the development with an Operator Search.

### **Mid market Hotel in Aurangabad**

SHS is assisting a group of Aurangabad based developers in developing a 100 room Mid-market business hotel in Aurangabad, in proximity to the airport and industrial areas of the city.

The hotel will be spread over 75,000 sft with extensive banqueting space.

SHS has completed the Feasibility study for the project and is in the process of facilitating a management tie-up with a leading international hotel operator.



### **Mid market Hotel in Mangalore**

A Market research and Economic feasibility Study for a Mid-market Hotel development in Mangalore, was conducted by Spectra, for the promoters of one of Mangalore's top manufacturing companies.

The proposed development comprises of 75 rooms and extensive F&B and banqueting facilities. Spectra is currently in the process of identifying an operator for the management of the property.

### **Operator Search for Spa Resort, Corbett (Uttarakhand)**

Spectra is assisting with an Operator search for a high end Spa Resort development with 36 rooms, near the Corbett National Park in Uttarakhand.

### **Development of Hotel Chain at Religious Destinations, Pan India**

Spectra is currently involved with the Market Research, Product Positioning and Development Strategy for Proposed Mid-Market Hotel Chain across Religious destinations across India.

Spectra has carried out a detailed Market research of religious destinations including Ajmer-Pushkar, Amritsar, Haridwar, Rishikesh, Ujjain, Shirdi, Rameshwaram & Tirupati etc. to assess the product requirement for Hotels in cities of religious significance and ensuring the product is economically feasible.

Spectra is further assisting the development with identifying an Operator and Investors for the project.